

## PVC Conduit fittings

Alva molded PVC conduit fittings are engineered for dependable performance in electrical systems. Designed for easy installation and long-term durability, our fittings ensure secure connections and smooth transitions in both residential and commercial applications.

### Applications

Electrical conduit systems, surface and wall-mounted installations, termination points, commercial and industrial wiring systems and conduit-to-box transitions.

### Key Features:

- Molded from high-strength, weather resistant PVC
- Compatible with SCH. 40 and SCH. 80 conduit
- Ideal for indoor and outdoor use
- ETL Listed for safety and regulatory compliance



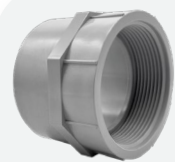
PVC Conduit  
**Center stop coupling** Part. N°  
**MC##U**  
Sizes: 1/2" thru 6"  
Used to join two sections of PVC conduit while maintaining precise alignment and depth control.



PVC Conduit  
**Bell end** Part. N°  
**MB##U**  
Sizes: 1/2" thru 6"  
Designed to provide a smooth, flared entry point for conduit runs.



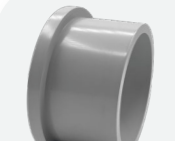
PVC Conduit  
**Male adapter** Part. N°  
**MA##U**  
Sizes: 1/2" thru 6"  
Male threaded end for secure box or enclosure connection



PVC Conduit  
**Female adapter** Part. N°  
**FA##U**  
Sizes: 1/2" thru 6"  
Used to connect PVC conduit to threaded male fittings, such as electrical boxes.



PVC Conduit  
**End cap** Part. N°  
**EC##U**  
Sizes: 1/2" thru 6"  
Used to seal off the open end of a conduit run, protecting electrical systems from environmental exposure.



PVC Conduit  
**Box adapter** Part. N°  
**BA##U**  
Sizes: 1/2" thru 6"  
Designed to connect PVC conduit to electrical boxes or enclosures, providing a secure and flush transition point.



PVC Conduit  
**Reducer bushing** Part. N°  
**RB####U**  
Sizes: 3/4" x 1/2" thru 4" x 3-1/2"  
Used to transition between different conduit sizes, allowing a larger conduit to connect securely to a smaller one.



PVC Conduit  
**Pipe clamps** Part. N°  
**CL##U**  
Sizes: 1/2" thru 4"  
Used to secure conduit runs to walls, ceilings, or other surfaces, keeping them organized and properly supported.

### U.S. Headquarters

📍 8750 NW 36th Street, Suite 450 Doral, Florida 33178  
📍 1601 Hill Ave, West Palm Beach, FL 33407

✉ sales@alvapvc.com  
☎ +1-561-421-1868

www.alva-mfg.com  
📷 @alvapvc